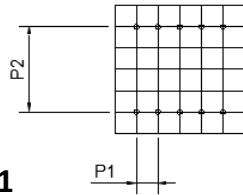
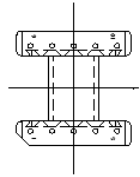
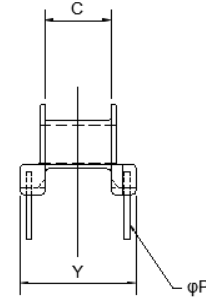
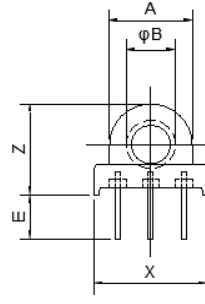
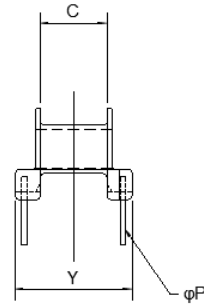
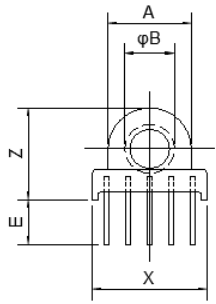


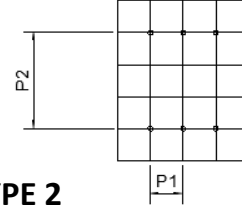
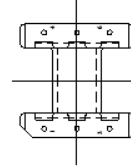
BEP TYPE

寸法単位:mm

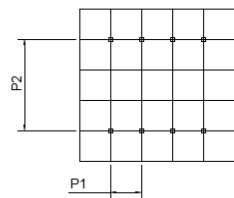
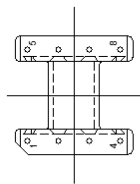
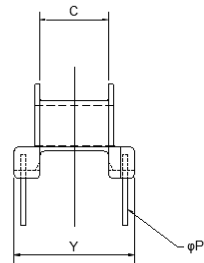
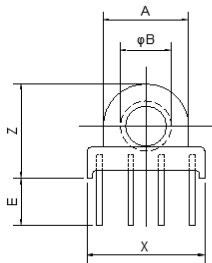
ホビン型式	TYPE	A	B	C	D	E	F	X	Y	Z	ΦP	P1	P2	端子数
BEP-7-314W	2	7.0	4.5	3.4	-	3.25	-	9.2	7.4	8.4	0.6	2.5	5.0	4 (中央2本抜き)
BEP-7-316DFR	2	7.0	4.5	3.1	-	3.25	-	9.2	7.4	8.4	0.6	2.5	5.0	6
BEP-7-316W	2	7.0	4.5	3.4	-	3.25	-	9.2	7.4	8.4	0.6	2.5	5.0	6
BEP-7-316DNFR	2	7.0	4.5	3.1	-	3.81	-	9.2	7.4	8.4	0.6	2.5	5.0	6
BEP7-316SCPFR	2	7.05	4.4	3.2	-	3.25	-	9.2	7.4	8.18	□0.5	2.5	5.0	6
BEP13-3110D	1	9.6	5.7	7.7	-	5.3	-	13.2	13.5	10.8	0.6	2.5	10.0	10
BEP13-3110DSFR	1	9.6	5.7	7.7	-	3.1	-	13.2	13.5	10.8	0.6	2.5	10.0	10
BEP13-316DFR	2	9.6	5.7	7.7	-	5.3	-	13.2	13.5	10.8	0.6	3.8	11.4	6
BEP17-318DFR	3	11.4	7.2	9.4	-	5.0	-	19.0	19.0	13.2	0.6	5.0	15.0	8



TYPE 1



TYPE 2



TYPE 3